

Transport, sustainable  
living and biodiversity

*Tom Butterworth,  
Associate Director,  
Biodiversity*







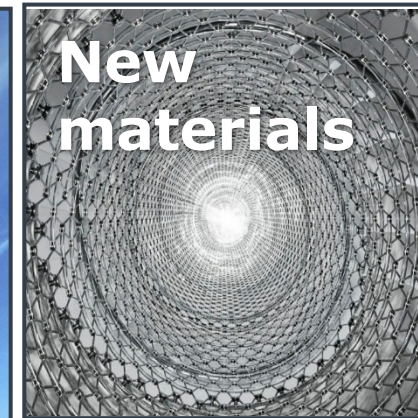
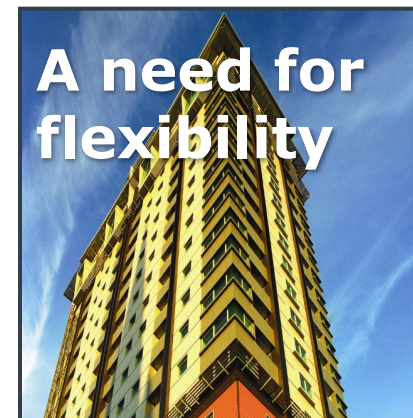
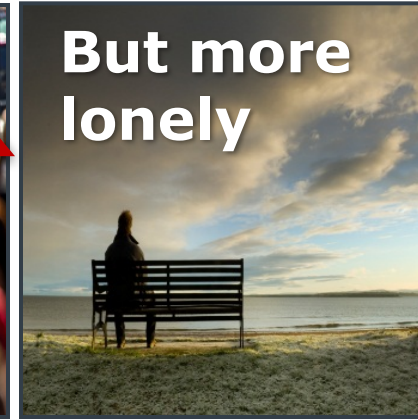
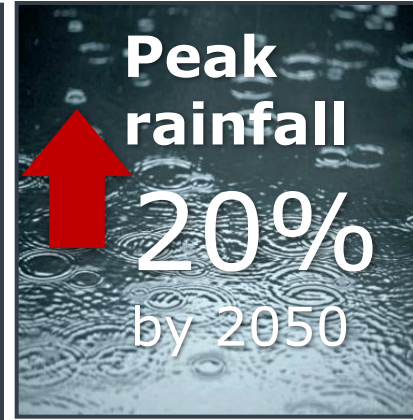
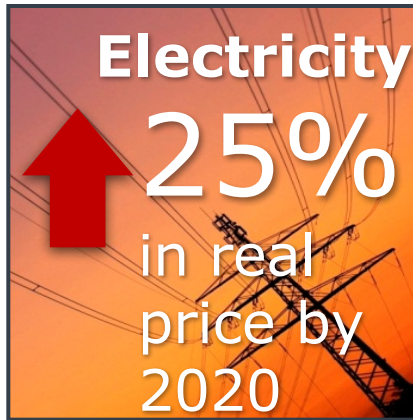
# THE UNITED KINGDOM IN 2030

## KEY TRENDS FOR THE BUILT ENVIRONMENT

2



# We've 12 key trends identified in the UK, for example.





# The Great Acceleration

1950 marked the beginning of a massive acceleration in human activity and large-scale changes in the Earth system.



SOURCE: igbp.net | Steffen et al., 2005, Global Change and the Earth System, Springer, pp. 132-133  
DESIGN: Globaia.org

International Geosphere-Biosphere Programme - Global Change  
<http://www.igbp.net/globalchange/greatacceleration.4.1b8ae20512db692f2a680001630.html>





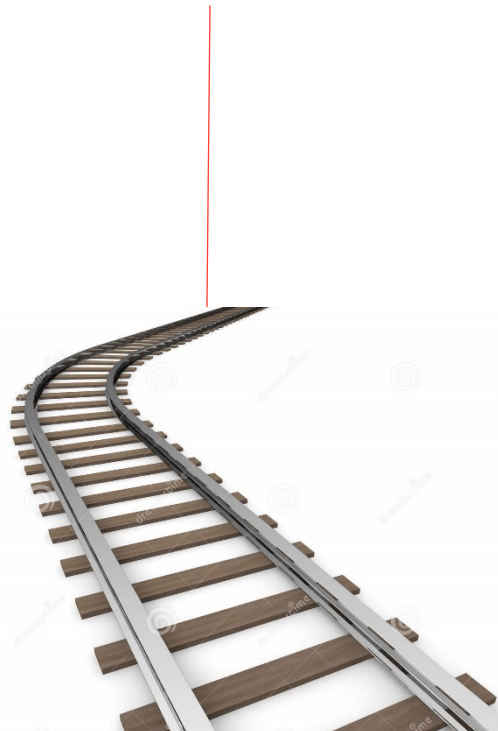
How can we address this in the places we design?



The way we travel, why we travel and where we travel too are changing just as rapidly.











1. A bridge
2. An income (it is a toll bridge)
3. Wood fuel
4. Carbon sequestration
5. Stabilisation of the bank
6. Flood water management
7. Air and water cleaning
8. A beautiful place

And it is self repairing!



















# Victoria Business Improvement District



- Fitting 25 ha of green roofs could deal with 80,000m<sup>3</sup> of rain water each year and prevent future surface water flooding in Victoria BID
- When implemented, green infrastructure opportunities identified by Victoria BID could reduce peak summer temperatures by up to 5.1°C



## Barking Riverside



- This new development in London includes surface water drainage in line with SuDS guidance, rain gardens, a series of swales and an environmentally enhanced river frontage by replacing hard concrete structures with softer, vegetative measures that are lower in cost, better for the environment and promote a more diverse intertidal habitat.



Transport, sustainable  
living and biodiversity

*Tom Butterworth,  
Associate Director,  
Biodiversity*

